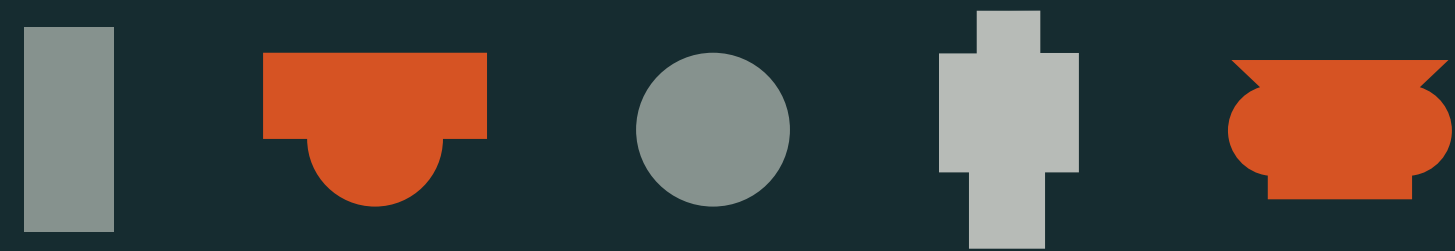


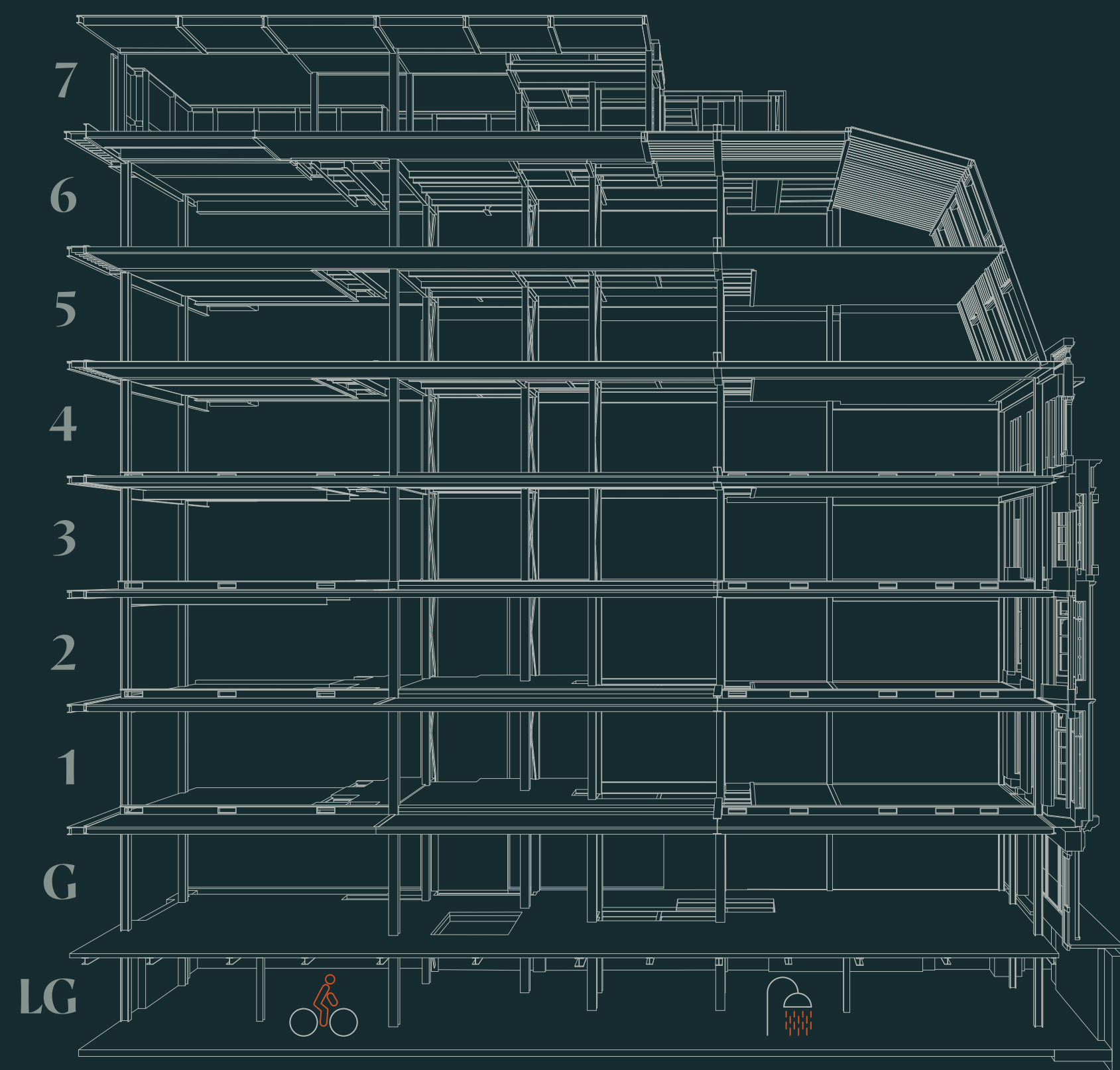
# Fifty Five

Pall Mall · St James's



# Floors

Floor	Office sq ft (NIA)	sq m (NIA)	Terrace sq ft (NIA)	sq m (NIA)
Seven	1,213	113	527	49
Six	3,098	288	958	89
Five	4,518	420	646	60
Four	5,592	520	—	—
Three	5,920	550	—	—
Two	6,166	573	—	—
One	6,153	572	—	—
Ground (Reception/library)	1,992	185	—	—
<b>Total (Office)</b>	<b>34,652*</b>	<b>3,219</b>	<b>2,131</b>	<b>198</b>
Ground (Crown Passage Retail)	2,837	264	—	—



*\*Includes reception/library  
Areas based on Plowman Craven Area Measurement Report (July 2024)*

# Ground Floor



- Reception
- Retail
- Core



Pall Mall

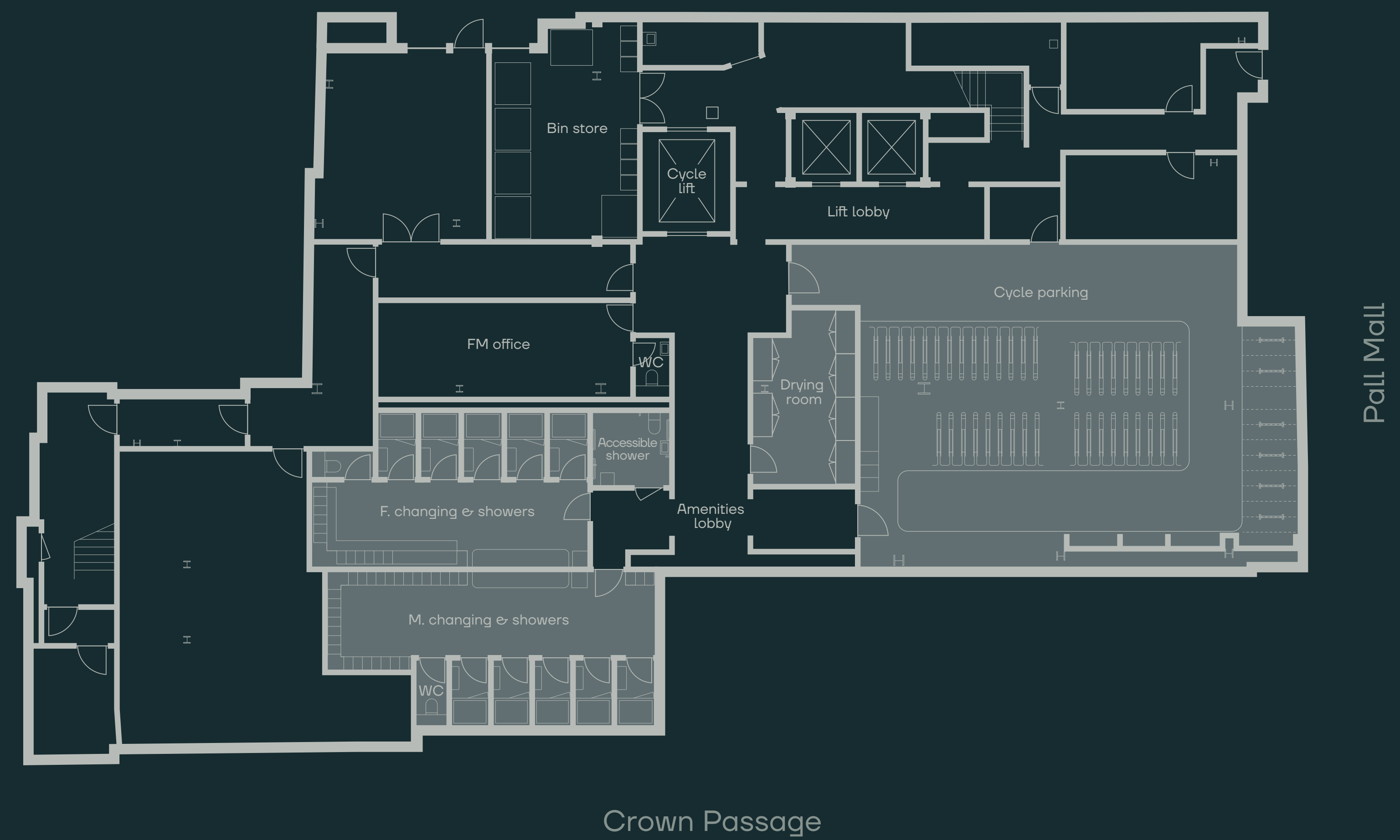
Crown Passage

\*Plans subject to final measurement upon completion

# Lower Ground Floor



- Occupier amenities
- Core/Plant



\*Plans subject to final measurement upon completion

# First Floor

6,153 sq ft | 572 sq m



- Office
- Core



\*Plans subject to final measurement upon completion

# Second Floor

6,166 sq ft | 573 sq m



- Office
- Core



\*Plans subject to final measurement upon completion

# Third Floor

5,920 sq ft | 550 sq m



- Office
- Core



\*Plans subject to final measurement upon completion

# Fourth Floor

5,592 sq ft | 520 sq m



● Office

○ Core



Pall Mall

Crown Passage

\*Plans subject to final measurement upon completion

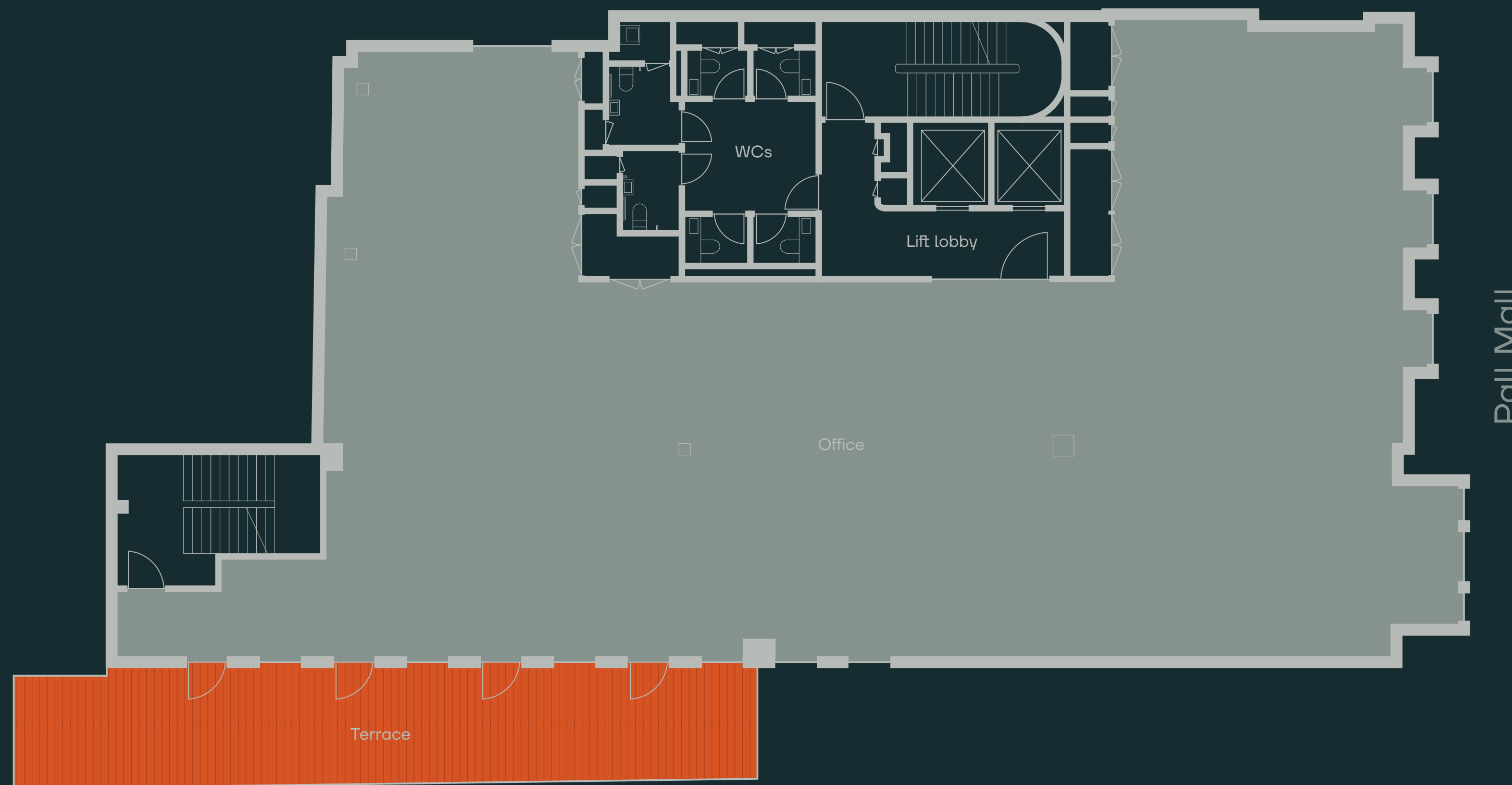


# Fifth Floor

4,518 sq ft | 420 sq m  
646 sq ft | 60 sq m terrace



- Office
- Core
- Terrace



Crown Passage

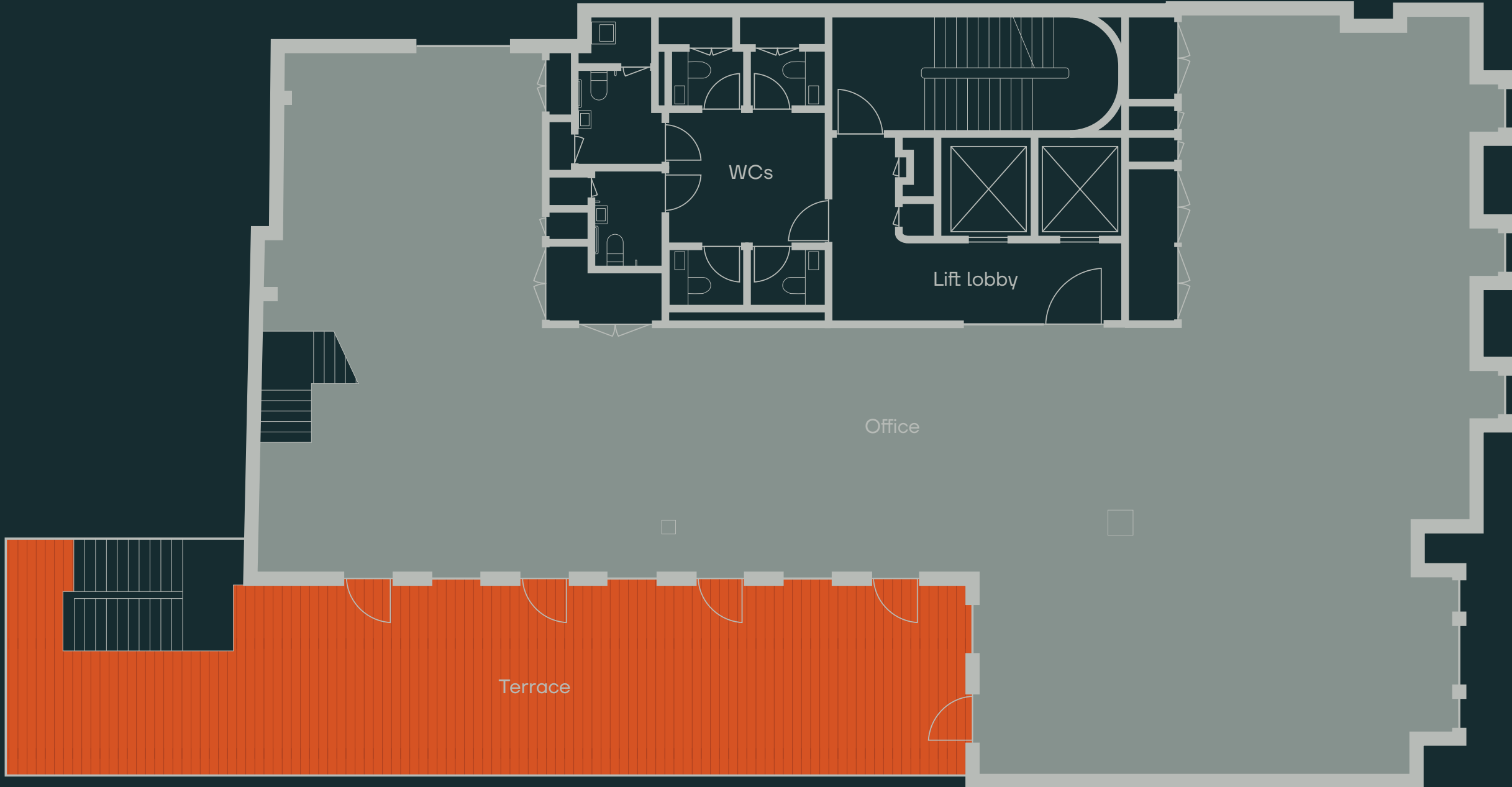
\*Plans subject to final measurement upon completion

# Sixth Floor

3,098 sq ft | 288 sq m  
958 sq ft | 89 sq m terrace



- Office
- Core
- Terrace



Crown Passage

Pall Mall

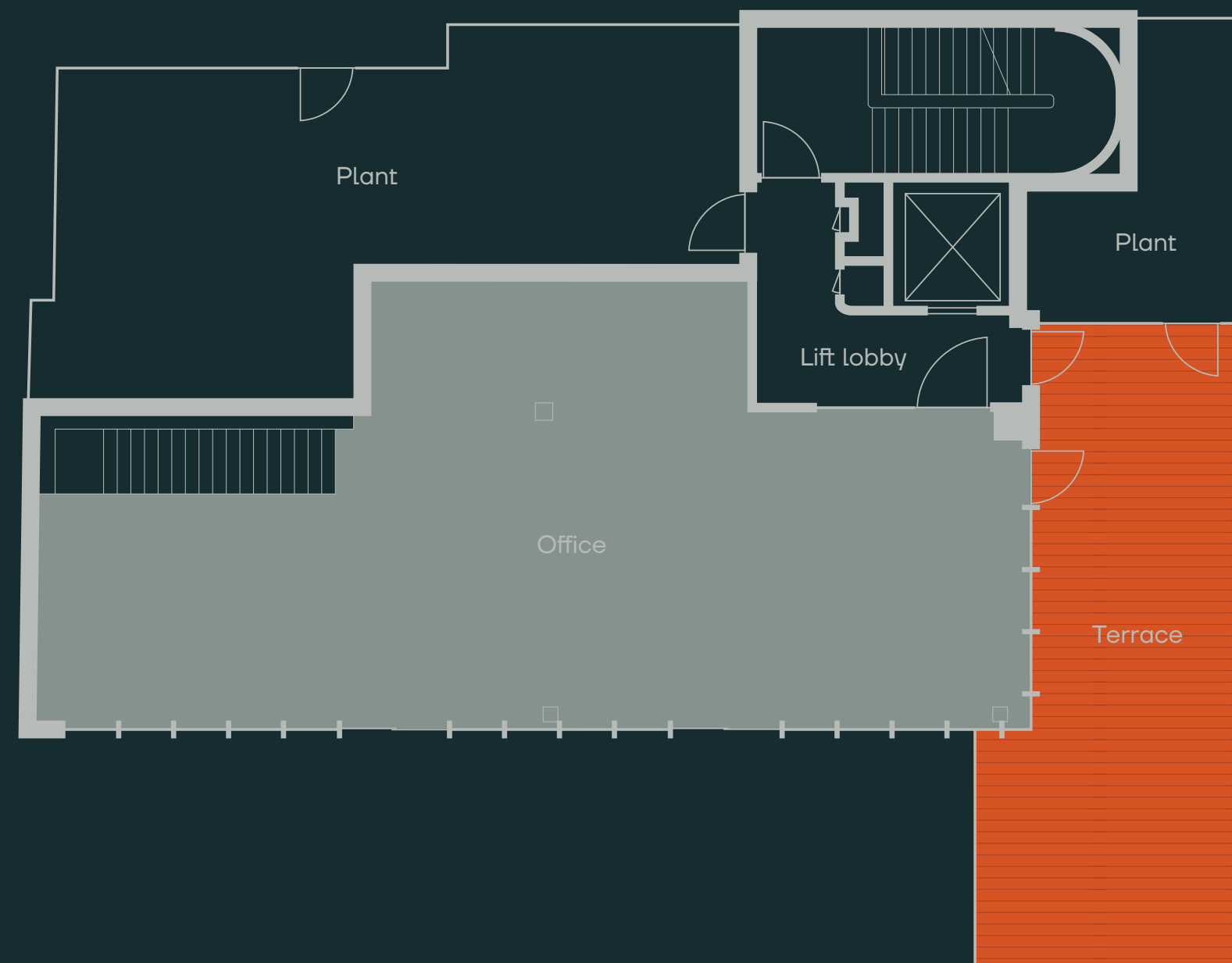
\*Plans subject to final measurement upon completion

# Seventh Floor

1,213 sq ft | 113 sq m  
527 sq ft | 49 sq m terrace



- Office
- Core
- Terrace



Pall Mall

Crown Passage

\*Plans subject to final measurement upon completion

# Contact

For more information please contact one of our agents



## Simon Tann

M: 07748 180 198

E: [simon.tann@levyrealestate.co.uk](mailto:simon.tann@levyrealestate.co.uk)

## Harry Cormack

M: 07815 463 822

E: [harry.cormack@levyrealestate.co.uk](mailto:harry.cormack@levyrealestate.co.uk)



## Alex Kerr

M: 07867 185 924

E: [alex.kerr@cbre.com](mailto:alex.kerr@cbre.com)

## Harry Tentori

M: 07787 698 421

E: [harry.tentori@cbre.com](mailto:harry.tentori@cbre.com)

Development Manager | **Simten**

Architect | **Orms**

Structures | **Heyne Tillet Steel**

MEP | **Flatt**

Project Manager | **Gardiner & Theobald**

Quantity Surveyor | **Exigere**

Misrepresentation act 1967: CBRE and Levy Real Estate, for themselves and for the lessor(s) of this property whose agents they are, give notice that: 1. These particulars do not constitute any part of, an offer or contract. 2. None of the statements contained in these particulars are to be relied on as statements or representations of fact. 3. Any intending lessee must satisfy himself by inspection or otherwise as the correctness of each of the statements contained in these particulars. 4. The lessor(s) do not make or give and neither CBRE nor Levy Real Estate, nor any person in their employment has any authority to make or give, any representation or warranty whatever in relation to this property, Finance Act 1989: Unless otherwise stated all prices and rents are quoted exclusive of VAT Property Misdescription Act 1991: These details are believed to be correct at the time of compilation but may be subject to subsequent amendment. September 2024. | Designed by Smart Soho

[fiftyfivepallmall.com](http://fiftyfivepallmall.com)